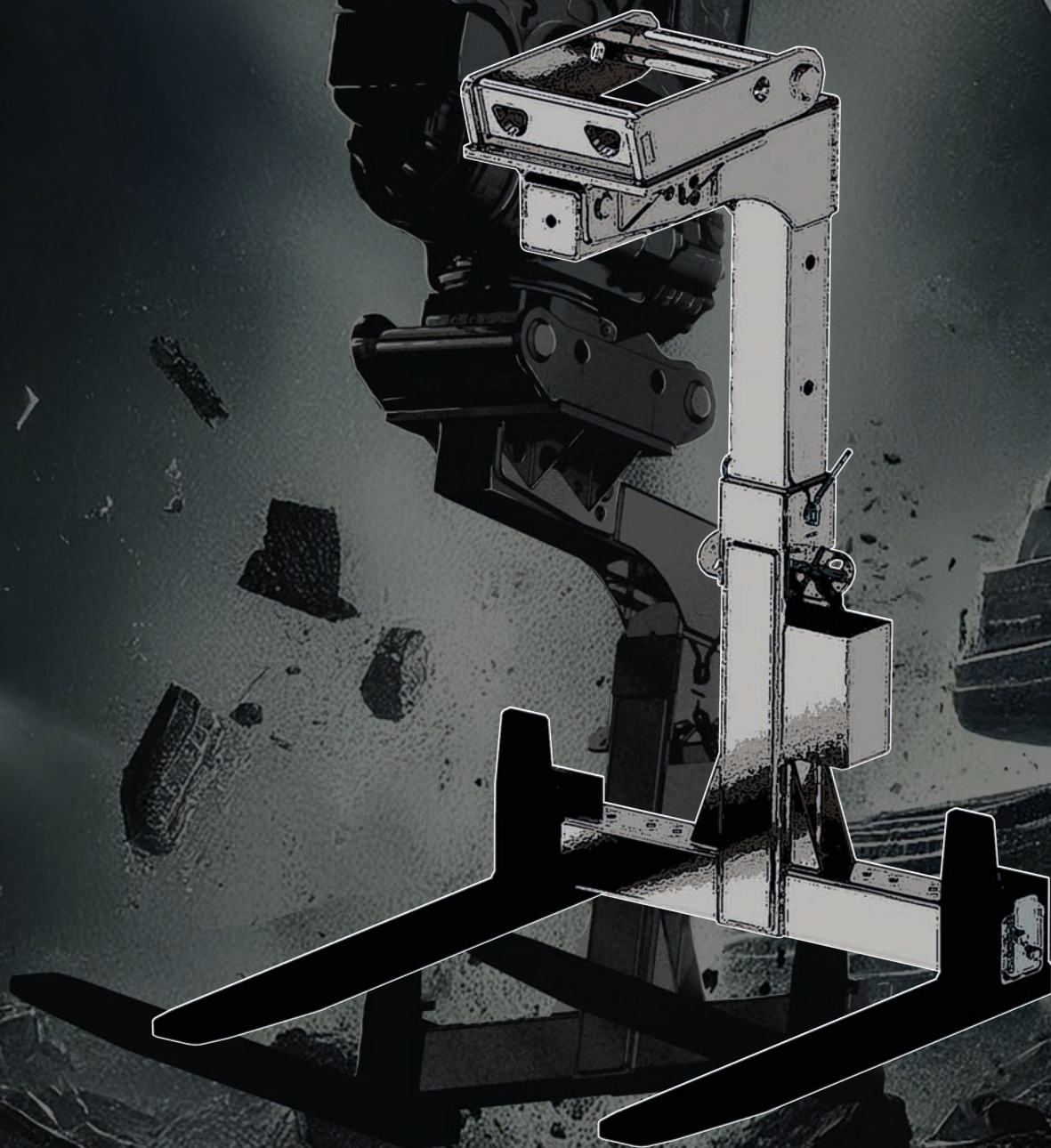


PISTER PALLET FORK POWER FORK PF

The first and only pallet fork
for excavators with central mass centre



PISTER PALLET FORK PF

The pallet fork with central mass centre

Like our tiltrotator, our pallet fork is a product of practice. Thanks to the central mass centre, the Pister Power Fork is much better suited to securely handle heavy loads than conventional pallet forks. It lets even small excavators move higher loads. The low dead weight adds further to its operability.

The unobstructed field of view from the operator's cab and the 0 to 6° adjustable angle is a tremendous asset when it comes to making work easier. The height-adjustable pallet fork operates both near and far from the excavator without any difficulty. Even great loading heights are perfectly manageable.

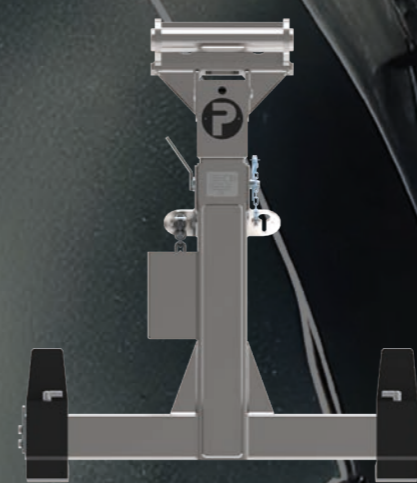
Characteristics and details

- Central mass centre for safe operation when handling high loads even with small excavators
- Light-weight but stable, with 2000 kg carrying capacity for units from 5 t upwards
- Low dead weight of 188 to 198 kg
- 0 - 6° adjustable technology prevents sideways tilting when rotating with tiltrotators
- Fork rakes pre-tensioned for horizontal load positions
- Unobstructed field of view on the fork rakes
- Fork rakes are easily adjustable
- Protected fork rake locks
- Loading height adjustable to 1200 mm max.
- Load securing chain for material load, with storage box
- All components except rakes are zinc-coated for augmented corrosion resistance and durability

BENEFITS

The pallet fork that sticks out

Central mass centre



0 bis 6° adjustable technology



Height adjustment



Load securing chain with storage box



Low dead weight



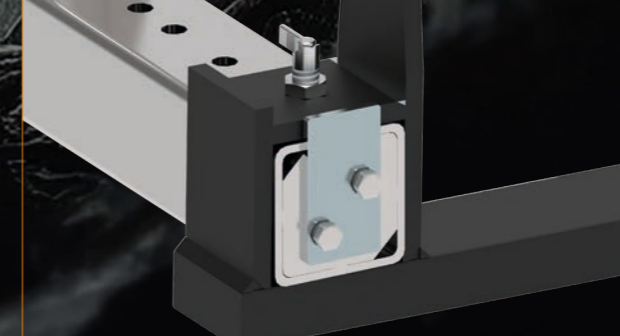
Anti-slip for material loaded



Perfect field of view from operator's cab



Protected fork rake locks




Protective handle for height adjustment



TECHNICAL DATA

Pister Power Fork PF



	PF 2000
Excavator category	5 - 12 t
Quick-change unit (QCU)	Different makes available
Carrying capacity	2000 kg
Minimal loading height	800 mm
Maximal loading height	1200 mm
Minimal loading width	410 mm
Maximal loading width	940 mm
Weight	188 bis 198 kg*
Miscellaneous	0 - 6° adjustable Load securing chain

Subject to technical modifications

*depending on selected quick-change unit

75-007-050

MANUFACTURER



PISTER
Kugelhähne

T +49 (0) 72 22 - 50 02 - 0
info@pister-gmbh.com
pister-gmbh.com
invasion-baustelle.de

SALES



HAIN
HYDRAULIK

T +49 8304 30 999 30
info@hain-hydraulik.de
hain-hydraulik.de

FOLLOW US

